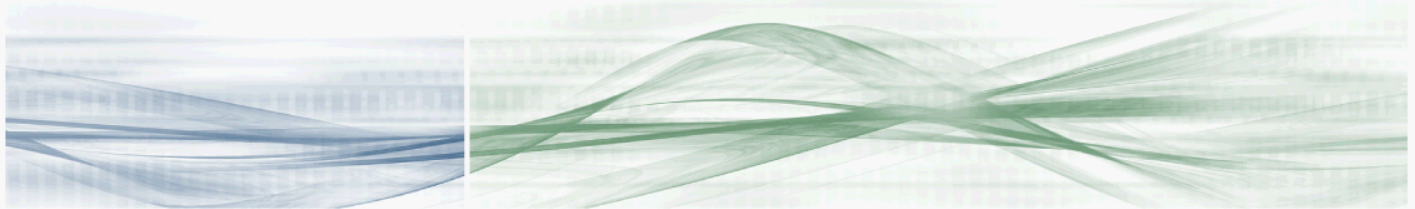


# Den Hartogh Deploys Expand to Enable Citrix Rollout as Part of Server Consolidation Project



## Profile

**Den Hartogh is an LSP (Logistics Service Provider) for the petrochemical industry, standing out in the European market with high quality service.**

## Applications

**Citrix  
Microsoft Office  
ERP**



## The Challenges

Den Hartogh has a highly distributed IT infrastructure across Europe. The cost and complexity involved in the maintenance, upgrade and back-up of remote servers was growing rapidly. To address these challenges, Den Hartogh initiated a server consolidation project that involved centralizing applications via Citrix. While this would simplify IT in the remote office, server consolidation raised a new set of challenges including the including the performance burden placed on the WAN.

---

***... Expand Accelerators have been crucial in enabling the server consolidation project and enhancing application response...”***

*Mark Warner, Chief Information Officer, Den Hartogh*

---

## The Solution

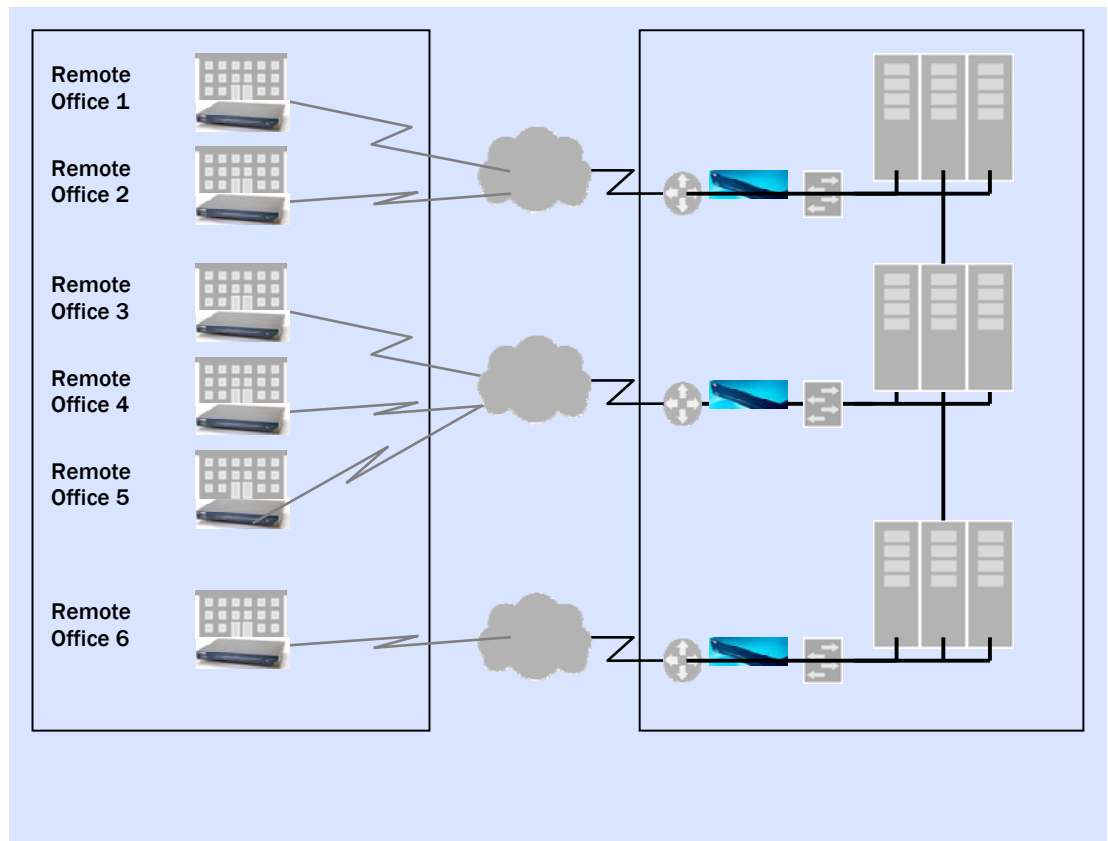
Den Hartogh needed to guarantee that the performance of its networked applications not be affected by the server consolidation project. Through InforIT, a local Expand partner, Den Hartogh deployed Expand Accelerators to ensure high standards of network performance and to maintain business continuity.

“A centralized network was of strategic importance to Den Hartogh due to the cost savings and IT simplification it would offer, but we were now faced with the challenge of maintaining the same high levels of access to our remote users,” commented Mark Warner, Chief Information Officer, Den Hartogh. “As a logistics company, we are highly reliant on our access to Citrix applications as they are the lifeblood of the company. Expand Accelerators have been crucial in enabling the server consolidation project and enhancing application response times by increasing WAN efficiency across the board.”

## The Results

Expand Accelerators are a powerful enabler in IT centralization projects including the deployment of Citrix solutions. By increasing the number of Citrix user sessions by 4x and accelerating Citrix response times and print jobs by 400%, Expand removes the performance hurdles that stand in the way of successful server consolidation initiatives.

“The network infrastructure witnessed extensive upheaval recently with the server consolidation project and the new Citrix application delivery system,” continued Warner. “Expand technology has been key in supporting and realizing the success of this project and has improved the speed and performance of our network while reducing overall WAN costs. Den Hartogh now operates in a stable environment where fast, reliable and secure remote access is guaranteed to improve remote office user productivity. With Expand technology we now also have a platform that will help us migrate to an MPLS/VPN.”



**Fig. 1**  
The diagram to the right illustrates sample Accelerator deployments